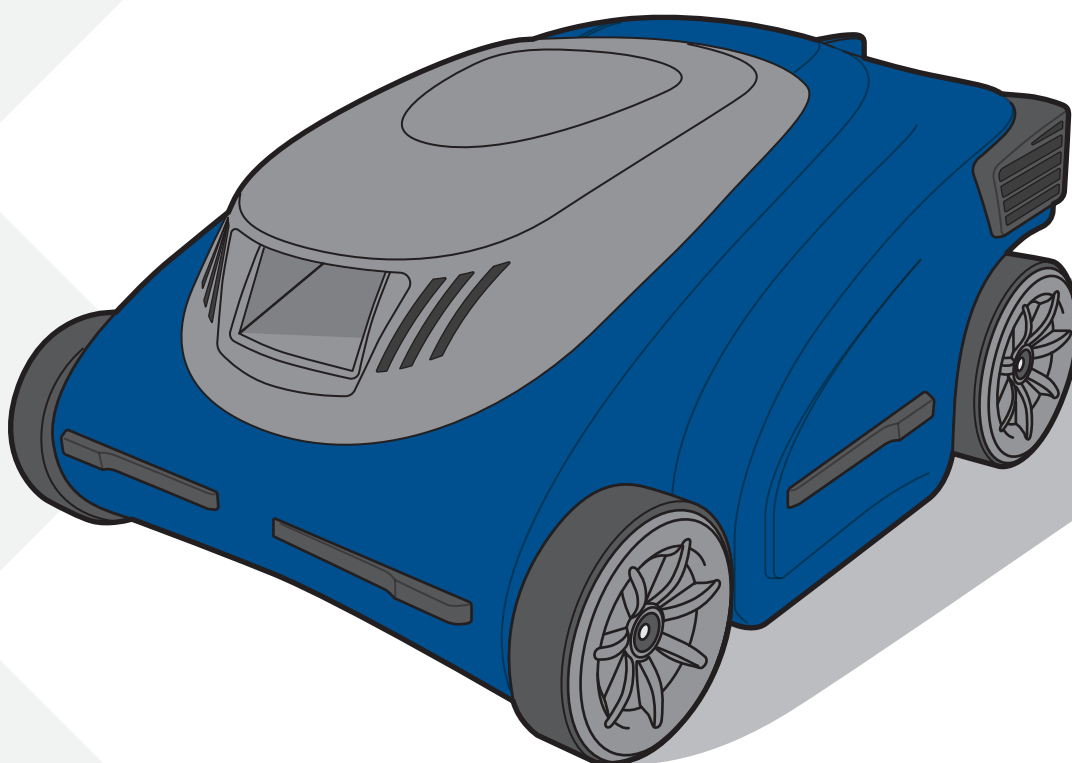




BLUESTORM®  
ROBOTIC POOL CLEANER

**INSTALLATION AND USER'S GUIDE**

*Original Instructions*



EN



IMPORTANT SAFETY INSTRUCTIONS, READ AND FOLLOW ALL INSTRUCTIONS, SAVE THESE INSTRUCTIONS

**WATER SOLUTIONS | P-INSB-BSTRM (Rev. 06/2017)**

## INTRODUCTION

Thank you for purchasing a Pentair Robotic Pool Cleaner.

We are sure that your Pentair Robotic Pool Cleaner will provide you with reliable, convenient and cost-effective pool cleaning. Its reliable filtration in all pool conditions enhances pool hygiene.

Robotic Pool Cleaners by Pentair deliver advanced cleaning technologies, long-lasting performance and easy maintenance. You and your family will be free to enjoy your swim with full confidence that your pool is completely clean.

## SPECIFICATIONS

Motor protection: IP 68

Minimum depth: 0.50m / 1.6ft

Maximum depth: 4m / 12ft

Vibration:  $a_h \leq 2,5 \text{ m/s}^2$

Noise emission:  $L_{pA} \leq 70 \text{ dB(A)}$

### Power supply unit

Input: 100-240 VAC 50/60Hz 2.7A

Output: DC 24V 120W IP 65

**EN Declaration of conformity**      **EN Directives – Harmonised standards**

**2004/108/EC**    **2006/95/EC**    **EN 60335-1,2,40**      **EN 60335-2-41**

EN - We hereby declare, under our sole responsibility, that the product is in accordance with the specified Directives

Lausanne, 01-07-2017



**Guillaume Goussé**  
European Operations Vice President

### Customer service & Hotline

HOTLINE: +33 9 51 53 95 64 (Mon > Fri : 08:30 > 12:00 + 13:30 > 17:30 )

Website : [www.pentairpooleurope.com](http://www.pentairpooleurope.com)

Email: [techsupport.poolemea@pentair.com](mailto:techsupport.poolemea@pentair.com)

The manufacturer, Pentair has the right to modify the products without previous notice for as far as their characteristics are not really changed by this.

© 2017 Pentair. All rights reserved

This document is subject to change without notice. Trademarks and disclaimers: BlueStorm® and Pentair are trademarks and/or registered trademarks of Pentair and/or its affiliated companies. Unless noted, names and brands of others that may be used in this document are not used to indicate an affiliation or endorsement between the proprietors of these names and brands and Pentair. Those names and brands may be the trademarks of those parties or others.

# Content

## PRESENTATION

> Warning & Caution p 01

## INSTALLATION - SPECIFICITES

> Before first use p 02

> Start-Up p 05

> Cleaning p 06

## OTHER

> Troubleshooting p 08

## Warning & Caution

 This guide provides installation and operation instructions for BlueStorm. Consult Pentair with any questions regarding this equipment .

**Attention User:** This manual contains important information that will help you in operating and maintaining this product. Please retain it for future reference. **WARNING:** Operators shall be adequately instructed on the use of these machines

### SAFETY

- The unit must be supplied through a residual current device (RCD) having a rated residual operating current not exceeding 30 mA
- A Ground Fault Current Interrupter (GFCI-USA) or a Residual Current Device (RCD-EUROPE) must be installed to protect your electric outlet and prevent any possible electric shock.
- Keep the power supply out of standing water
- Position the power supply at least 3m/10ft away from the edge of the pool
- Do not enter the pool while the Pool Cleaner is working
- Unplug the power supply before servicing
- The unit must only be supplied by the provided power supply.
- The connection to the branch circuit should be consistent with the local and national wiring rules (electrical code).
- If the supply cord is damaged, it must be replaced by the manufacturer's service agent or a qualified and trained person in order to avoid hazards.

 **DO NOT ENTER THE POOL WHILE THE POOL CLEANER IS WORKING**

### CAUTIONS

Use the Robotic Cleaner in the following water conditions only:

Chlorine : 4 ppm max

pH : 7.0 - 7.8

NaCl : < 5000 ppm

Water temperature : 1 - 34°C / 34-93°F

This Robotic Cleaner cleans flat pool floor or with gentle slope of any finish, no matter how slippery.

A safety mode prevents the Robotic Cleaner to operate when outside of water.

The machine is also intended for commercial use, for example in hotels, schools, hospitals, factories, shops, offices and rental businesses."

 **DO NOT ALLOW CHILDREN TO USE OR PLAY WITH THE CLEANER**

### MAINTENANCE AND STORAGE

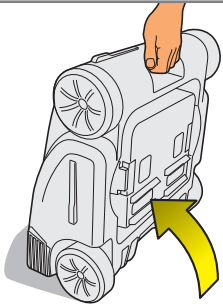
- Make sure that no water is left in the Pool Cleaner
- Thoroughly clean the filter and let it dry outside of the filter canister.
- Roll up the cable so that it has no kinks
- Store the Pool Cleaner in a protected area out of direct sun / rain / frost, at a temperature of between
- 5°-45°C / 41°-113°F
- DO NOT LUBRICATE

## Before first use 1/3

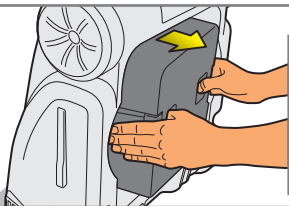
**i** Before the first use of the robotic cleaner, install the adequate filter in the filter canister. Two different filters are provided:

**Standard filtration (40µm):** Fabric texture, recommended on very dirty pools with debris such as soil, algae, sand etc.

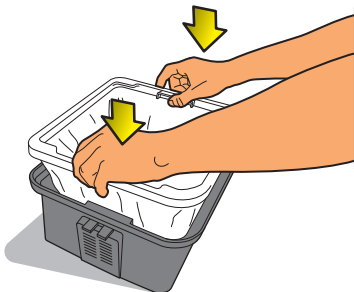
**Thin filtration (25µm):** « paper » texture, recommended for regular cleaning and when there is only little debris. !!! This type of filter is a consumable, do not dry in the sun !!!



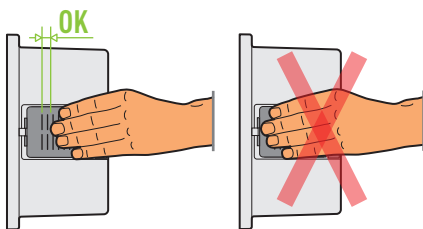
1.1 - Grab robotic cleaner by the front handle and place it vertically, sitting on its rear bumpers on a flat surface .



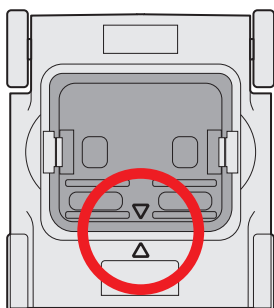
1.2 - Insert your hands in each side of the filter canister and simultaneously press both tabs to release the canister. Pull the Canister out and place it on a flat surface.



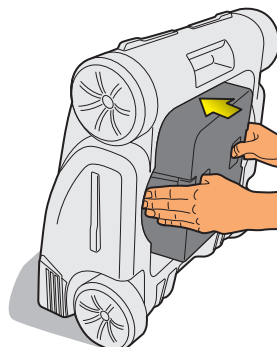
1.3 - Install the adequate filter in the canister.



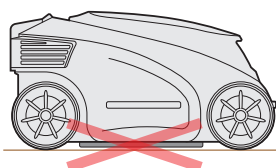
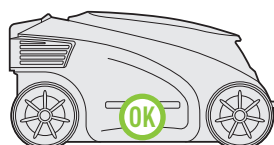
1.4.1 - Place your fingers as indicated not higher than the 3rd rib to prevent risk of pinching.



1.4.2 - Arrows on the cleaner and on the canister should match.



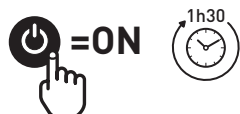
1.4.3 - Reposition the filter canister by pressing simultaneously both tabs while pushing the canister inside in the robotic cleaner until the stop, and then release the tabs to lock it in place.



1.4.4 - Make sure the cannister is properly installed, it shouldn't be visible from the side view. Otherwise repeat operations ensuring the canister is pushed to the end before releasing the tabs.

## Select working mode.

### AUTO MODE :



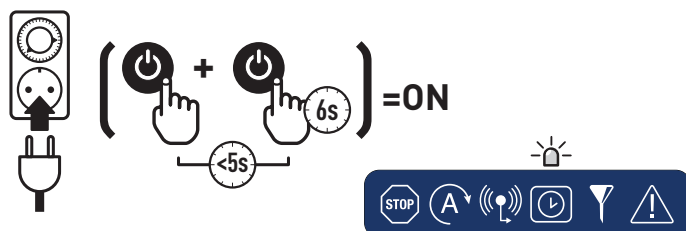
A simple press when the cleaner is OFF will start a 1h30 automatic cleaning cycle. The green LED above "A" icon turns ON.



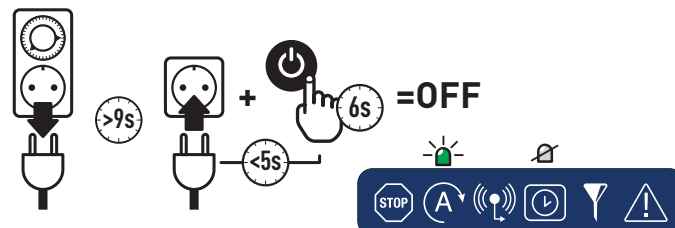
A simple press when the cleaner is ON will turn it OFF after 5 sec.



### TIMER MODE :



Plug the controller on an external timer and program operating schedule. Press once on the power button then within 5 sec press again and maintain for 6 sec until the LED above the timer icon turns ON.



Unplug the controller from the external timer, wait more than 9 sec to reset memory then plug the controller directly on the power socket, then within 5 sec press the power button and maintain for 6 sec until the LED above the timer icon turns OFF and the green LED above "A" turns ON. The cleaner is now in AUTO mode.

### FILTRATION ASSIST MODE :



This mode ensures a water flow in the pool when main filtration is off (i.e. winterization), the cleaner changes position every 15 min during 4 hours. Press once on the power button then within 5 sec press again and maintain for 10 sec until the LED above the filter icon turns ON.



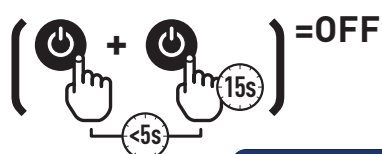
A simple press when the cleaner is ON will turn it OFF after 5 sec. This mode disables automatically when the cleaner turns off.



### SLIPPERY FLOOR MODE :



This mode is meant for tiles pools or when the floor is covered with algae to optimize pool coverage, prevent over-rotations (>180°C) and cable kinks. Press once on the power button then within 5 sec press again and maintain for 15 sec until the LED at the right of the warning icon turns ON. Then use the cleaner normally in Auto or Timer mode.

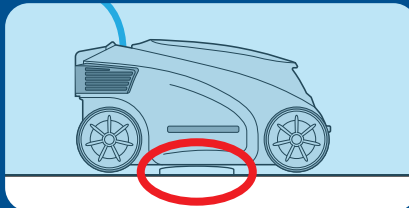
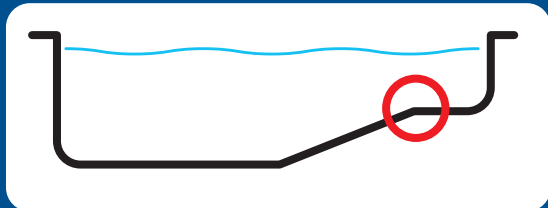


When the cleaner is OFF, press once on the power button then within 5 sec, press again and maintain for 15 sec until the LED at the right of the warning icon turns OFF.

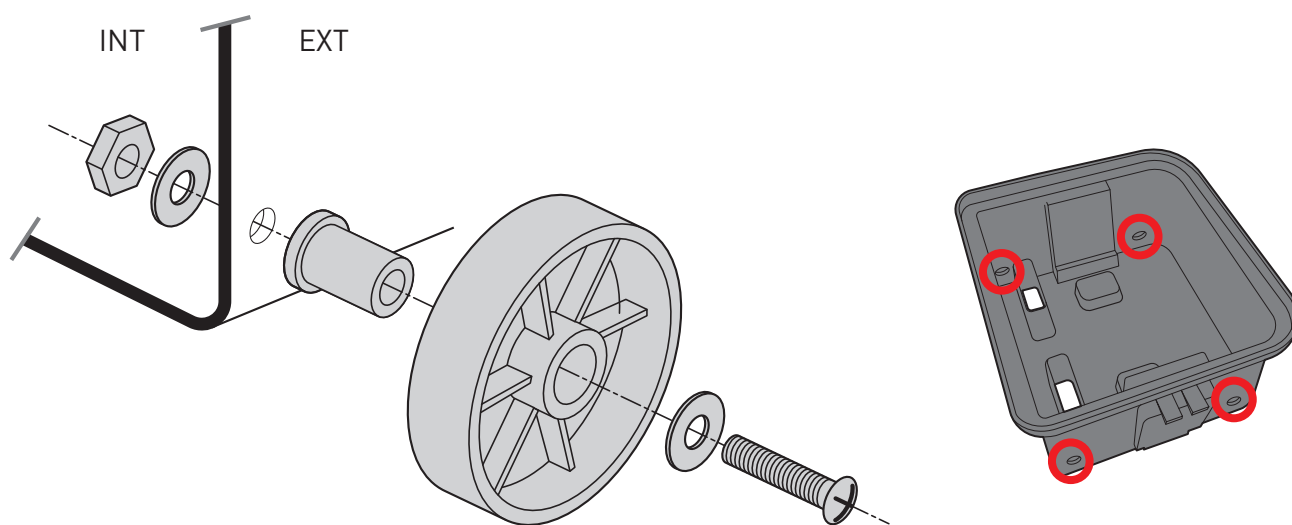


## Before first use 3/3

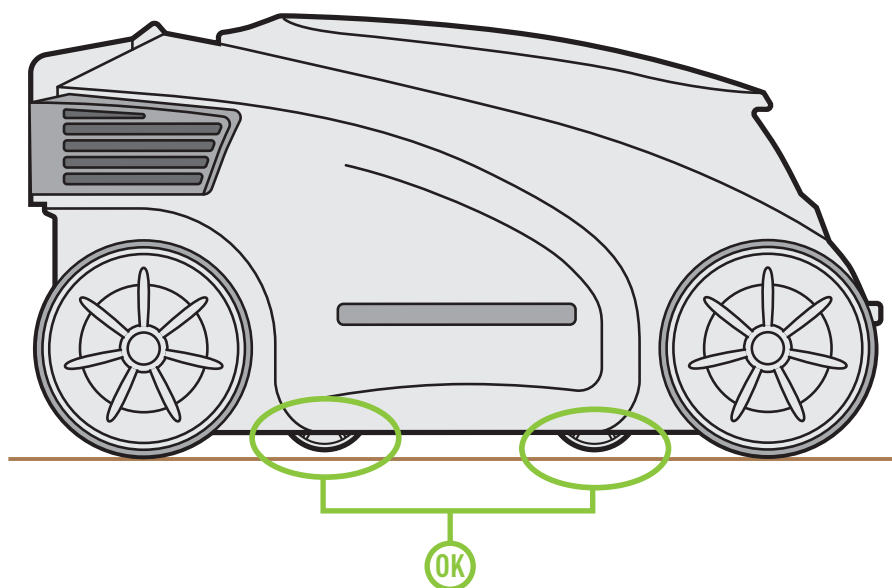
- i** If the pool floor has transitions or if the main drain is too high, it is recommended to install the 4 wheels on the filter canister to prevent the cleaner to get stuck.



2.1 – Install the 4 wheels provided in the accessories bag on the filter canister according the below instructions. Screw (cross tip) from the outside in, nut inside (12 mm closed-end wrench). Tight reasonably to prevent damaging the canister.



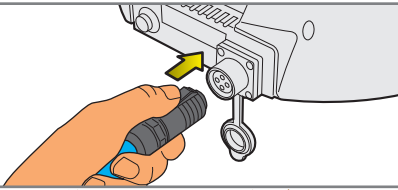
2.2 – Install the canister box following steps 1.4 then verify that the wheels are a couple of millimeters above the floor.



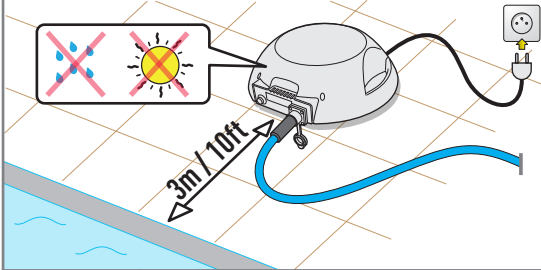
## Start-Up



3.1 - Unwind the cable and stretch it out completely so that it has no kinks.



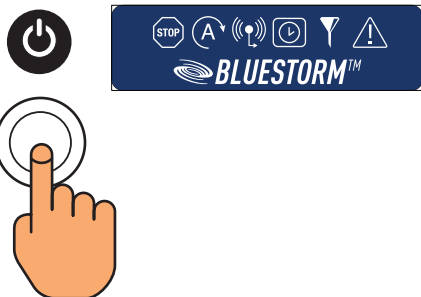
3.2 - Attach the floating cable to the controller box by inserting it with the notch on the connector lined up with the groove in the socket on the controller box.



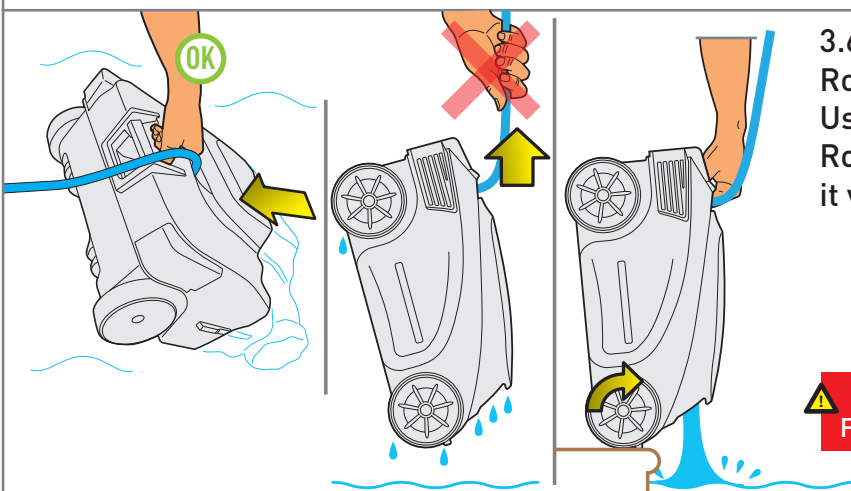
3.3 - Position the power supply so that it is approximately in the middle of the long side of the pool at a distance of 3m / 10ft from the water. Plug in the power supply and leave it in the OFF position. It is recommended to protect it from rain and direct sun exposure.



3.4 - Grab the robotic cleaner by the top handle. Put it into the pool. Release the Robotic cleaner and let it sink to the floor of the pool. Make sure that the floating cable is free of any obstructions.



3.5 - Turn the Controller box ON.  
The Robotic cleaner will now operate until the end of the cleaning cycle (1h30 unless otherwise programmed thru external timer mode).  
To stop the robotic cleaner before the end of the cleaning cycle, press the Power button for about one second. A red LED will blink meaning the robotic cleaner is now turned off.

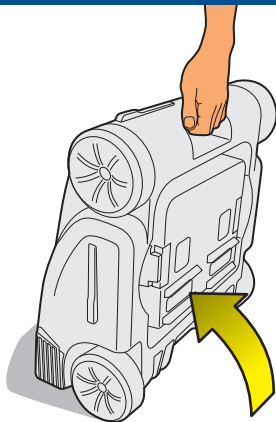


3.6 - Using the floating cable, bring the Robotic cleaner to the pool's edge. Using the handle, remove slowly the Robotic Cleaner from the pool and hold it vertically to let the water drain out.

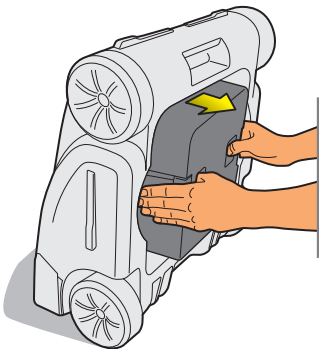
**DO NOT PULL THE ROBOTIC CLEANER FROM THE POOL USING THE CABLE.**

## Cleaning of the robot cleaner 1/2

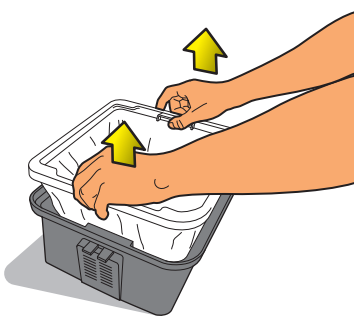
**i** It is recommended to clean the robot after each cycle of use or when slowly slowing down



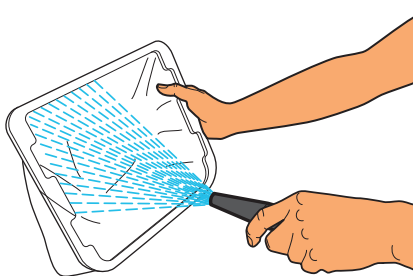
**4.1 - Grab robotic cleaner by the front handle and place it vertically, sitting on its rear bumpers on a flat surface.**



**4.2 - Insert your hands in each side of the filter canister and simultaneously press both tabs to release the canister. Pull the Canister out and place it on a flat ground. Debris is stored in the canister underneath the filter.**

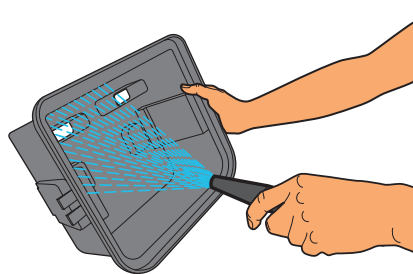


**4.3 - Remove the filter.**



**4.4 - Clean the filter with a hose.**

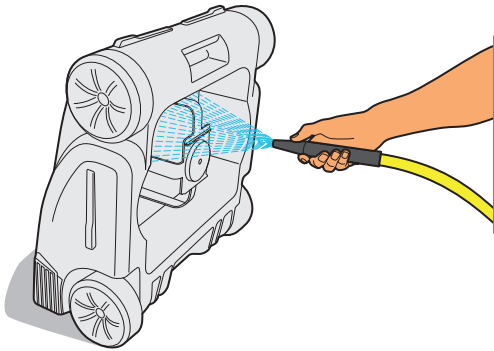
**i** The robotic cleaner requires a clean filter to deliver optimum performances as it only moves using jets from the impeller. The more clogged the filter, the weaker the jets and the slower the robotic cleaner.



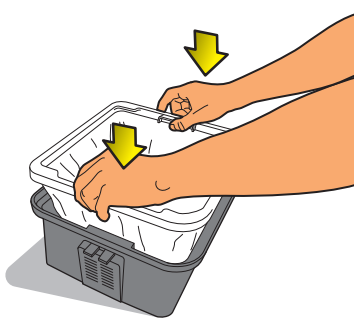
**4.5 - Clean canister with a hose.**



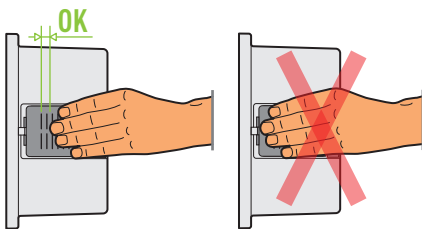
## Cleaning of the robot cleaner 2/2



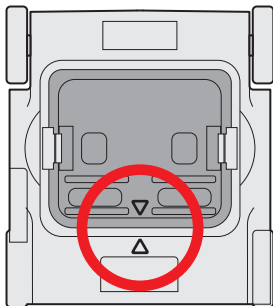
4.6 - If necessary (i.e. if fine debris pass through the filter), clean the inside of the robotic cleaner with a hose to remove dirt from the impeller and turret.



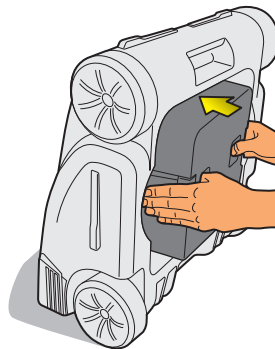
4.7 - Install the adequate filter in the canister.



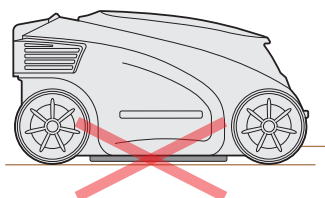
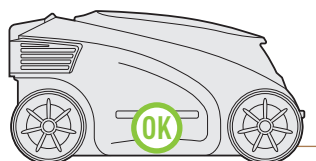
4.8.1 - Place your fingers as indicated not higher than the 3rd rib to prevent risk of pinching.



4.8.2 - Arrows on the cleaner and on the canister should match.



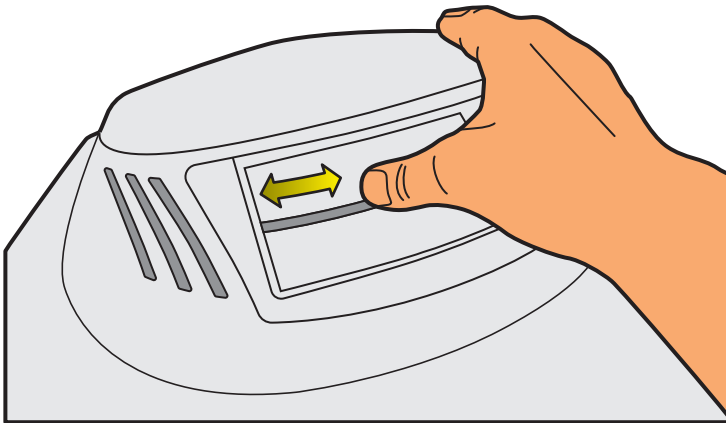


4.8.3 - Reposition the filter canister by pressing simultaneously both tabs while pushing the canister inside in the robotic cleaner until the stop, and then release the tabs to lock it in place.



4.8.4 - Make sure the cannister is properly installed, it shouldn't be visible from the side view. Otherwise repeat operations ensuring the canister is pushed to the end before releasing the tabs.

# Troubleshooting

**i** If the suggested solutions do not solve the problem, please contact our technical support team :  
- by email [techsupport.poolemea@pentair.com](mailto:techsupport.poolemea@pentair.com) or by phone +33 9 51 53 95 64.

SYMPTOMS	CORRECTIVE ACTIONS
The controller is ON but cleaner does not move or very slowly.	<p>1/ Clean the filter (4.1 to 4.6). Note: the Robotic cleaner requires a clean filter to deliver optimum performances as it only moves using jets from the impeller. The more clogged the filter, the weaker the jets and the slower the robotic cleaner.</p> <p>2/ Check that filter and canister are well positioned (4.9). If the robotic cleaner has operated with wrongly positioned filter or canister, clean the inside of the robotic cleaner with a hose to remove dirt from the impeller and turret (4.6).</p>
The robotic cleaner does not turn or not enough to change direction.	<p><b>i</b> Optimum rotation with empty filter and on a flat floor is within 60° and 120°. Degree of rotation may vary depending to the grip of the wheels on the pool floor.</p> <p>Check that dirt does not block rotation of the turret by passing your finger through the front vent to rotate the turret a few degrees. If you can feel resistance, clean the turret (4.6) until you can feel the turret turning free rotation.</p> 
<p>The orange LED is ON continuously</p>  	<p>The cleaner has turned to default mode. It still work properly but it is no longer driven by the obstacle detector but by a predefined path for pool of 10x5m, therefore if your pool is smaller, the robotic cleaner may stop for a few more seconds when he hits a wall before changing direction.</p> <p>Please contact Pentair Technical support by email to report the issue <a href="mailto:techsupport.poolemea@pentair.com">techsupport.poolemea@pentair.com</a> or by phone +33 9 51 53 95 64.</p>
Cleaner got stuck on main drain or in slope transition	Install the 4 wheels provided in the accessories bag on the filter box. (2.1 - 2.2).





PENTAIR AQUATIC SYSTEMS

INDUSTRIEPARK WOLFSTEE, TOEKOMSTLAAN 30, 2200 HERENTALS - BELGIUM, [WWW.PENTAIRPOOLEUROPE.COM](http://WWW.PENTAIRPOOLEUROPE.COM)

Copyright – Limited License: except as specifically permitted herein, no portion of the content on this document may be reproduced in any form or by any mean without the prior written permission of Pentair International SRL.